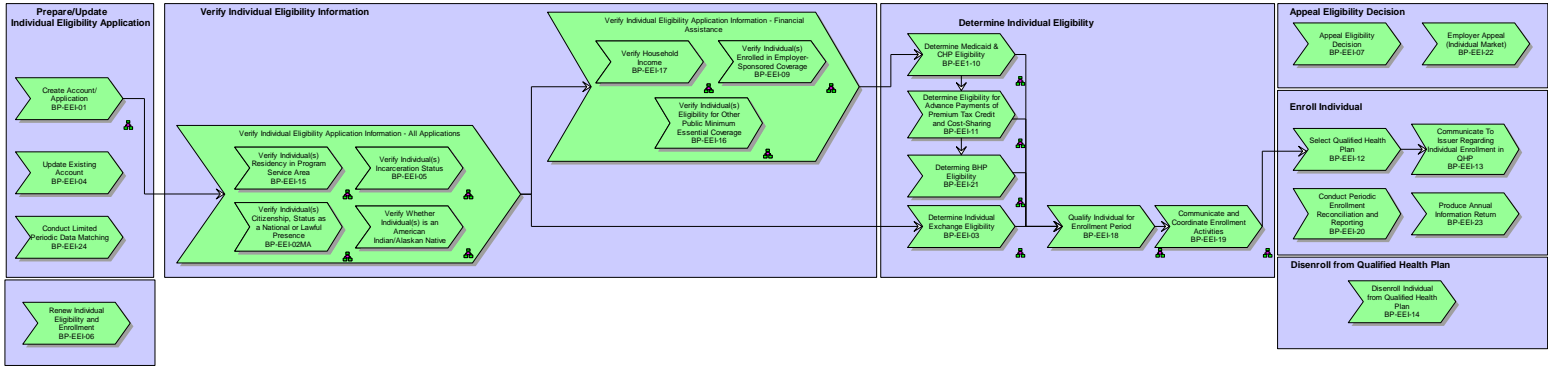
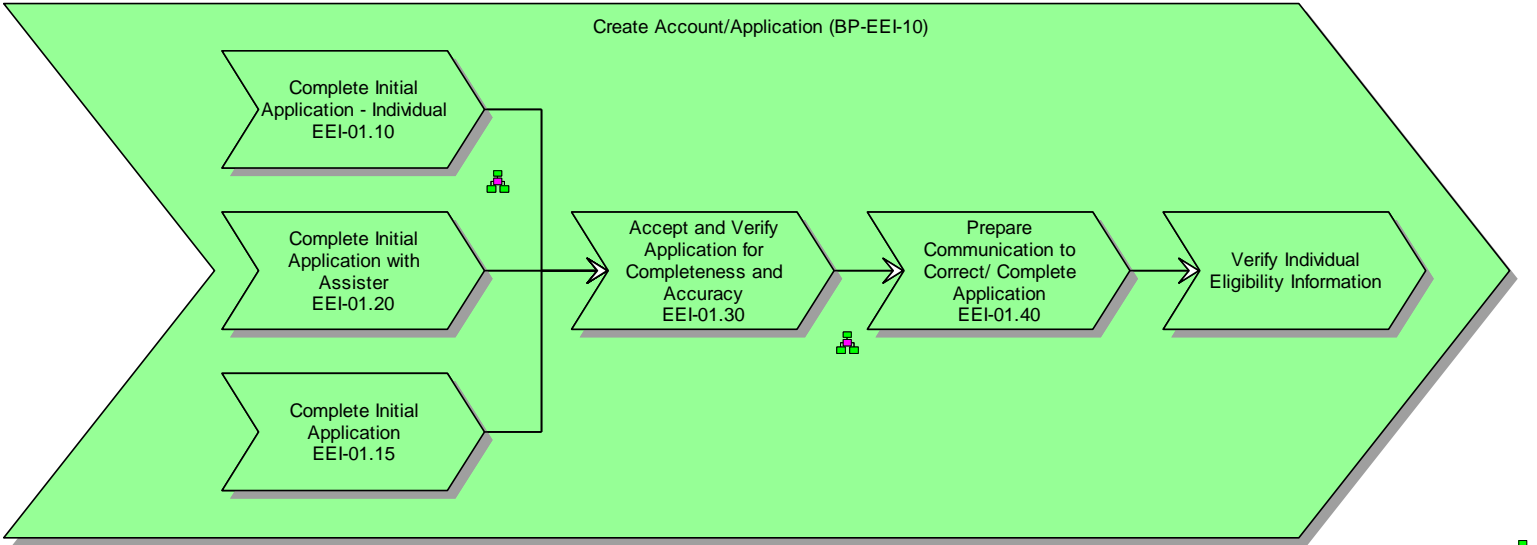
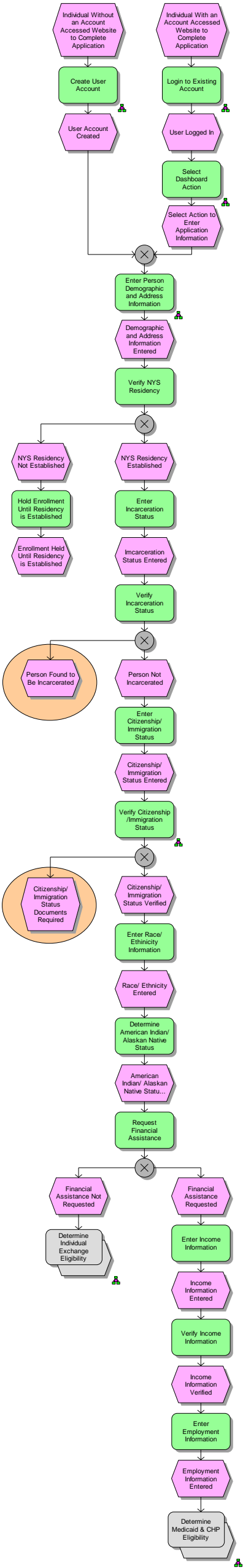


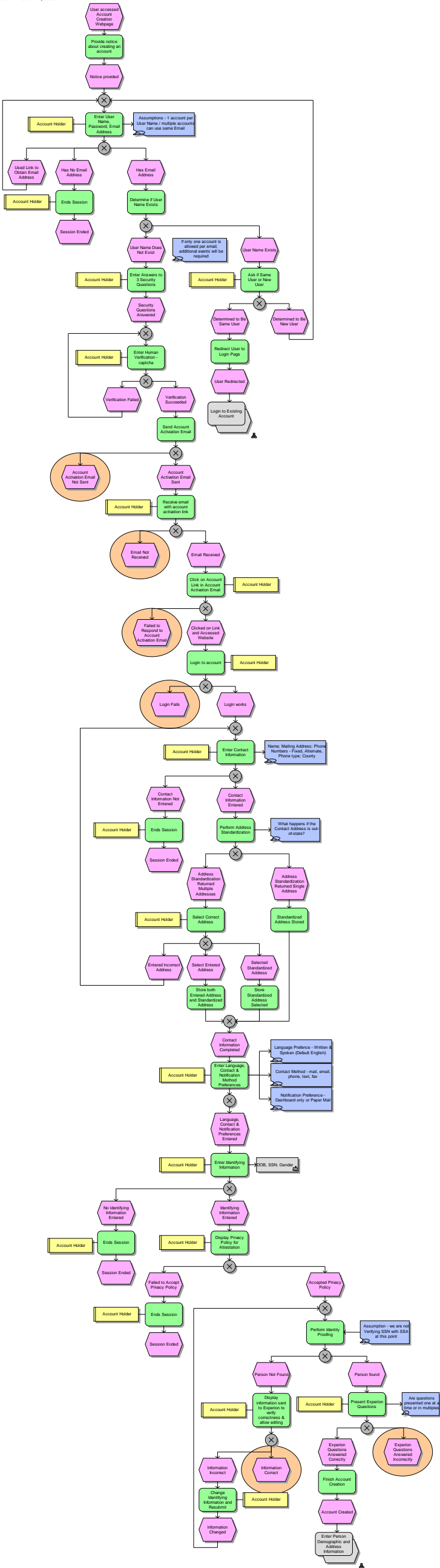
NY-HX Eligibility & Enrollment Business Process Models

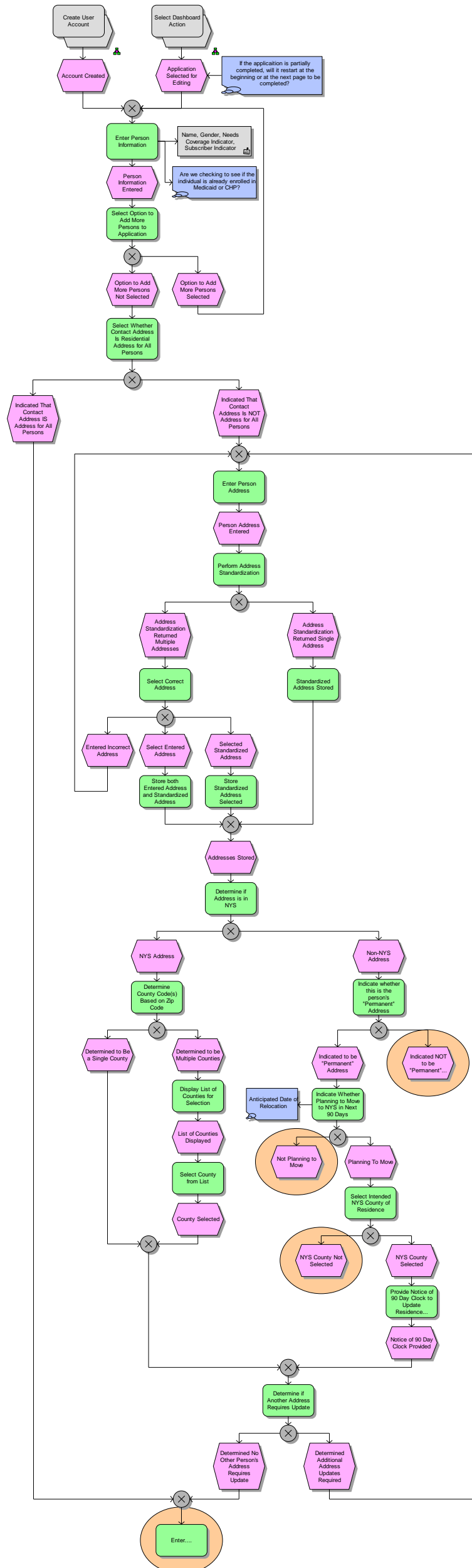
01 NY-HX Enrollment & Eligibility Process E2E Blueprint
10/18/12 9:47:22 PM Status: In process





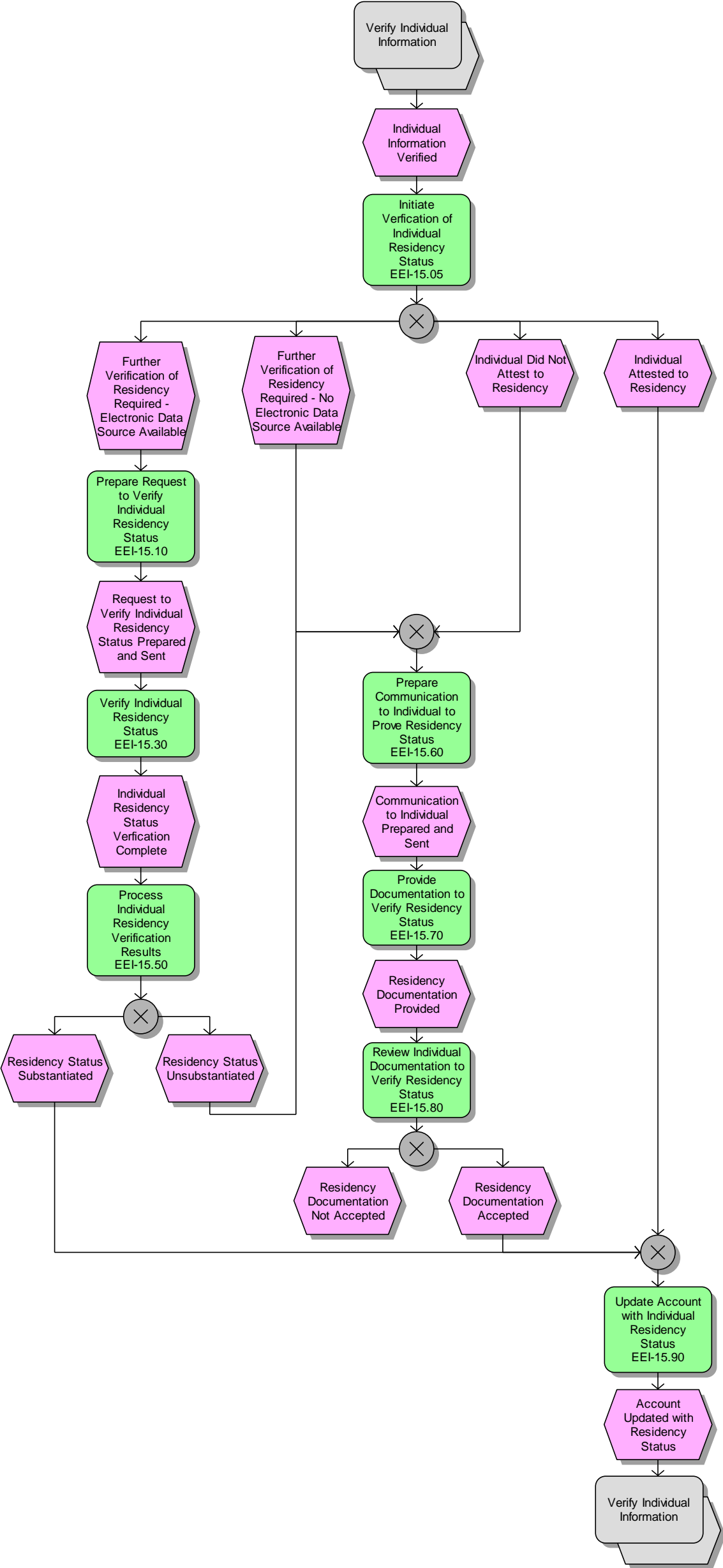


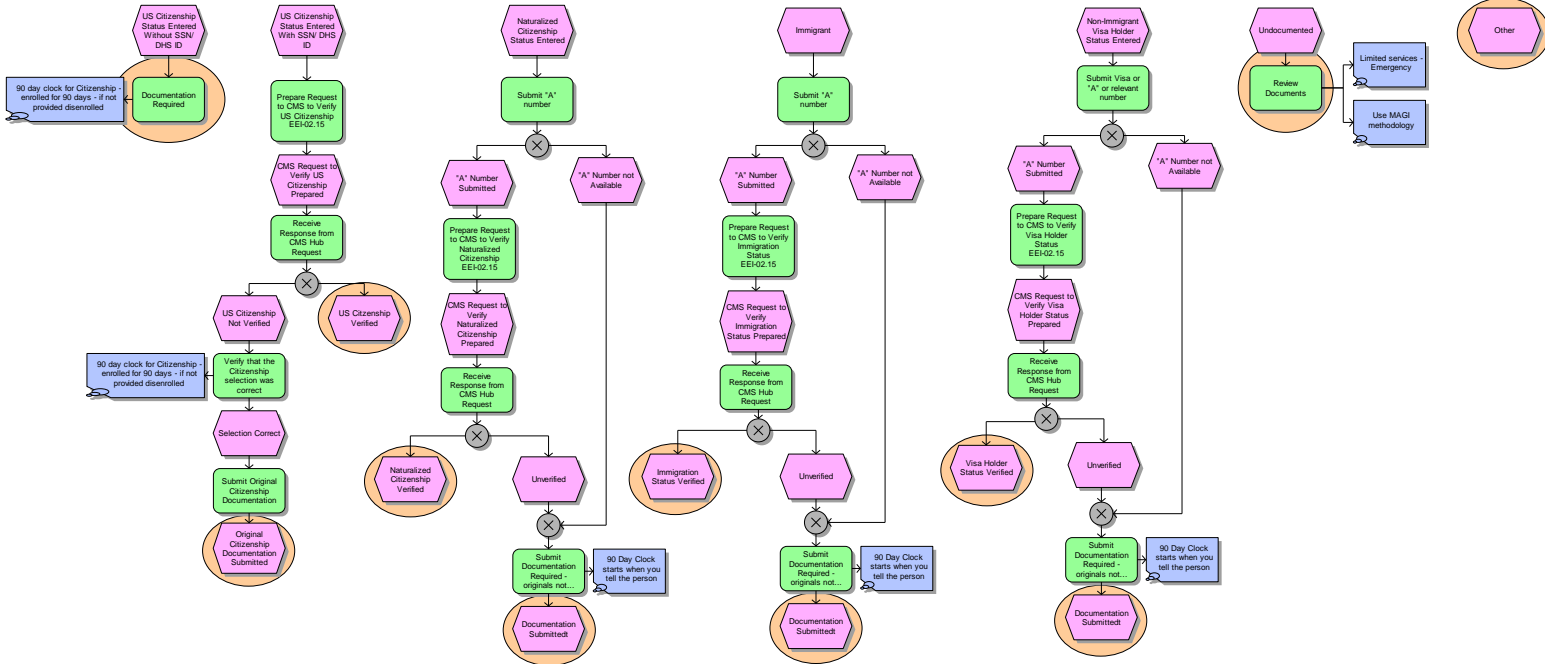


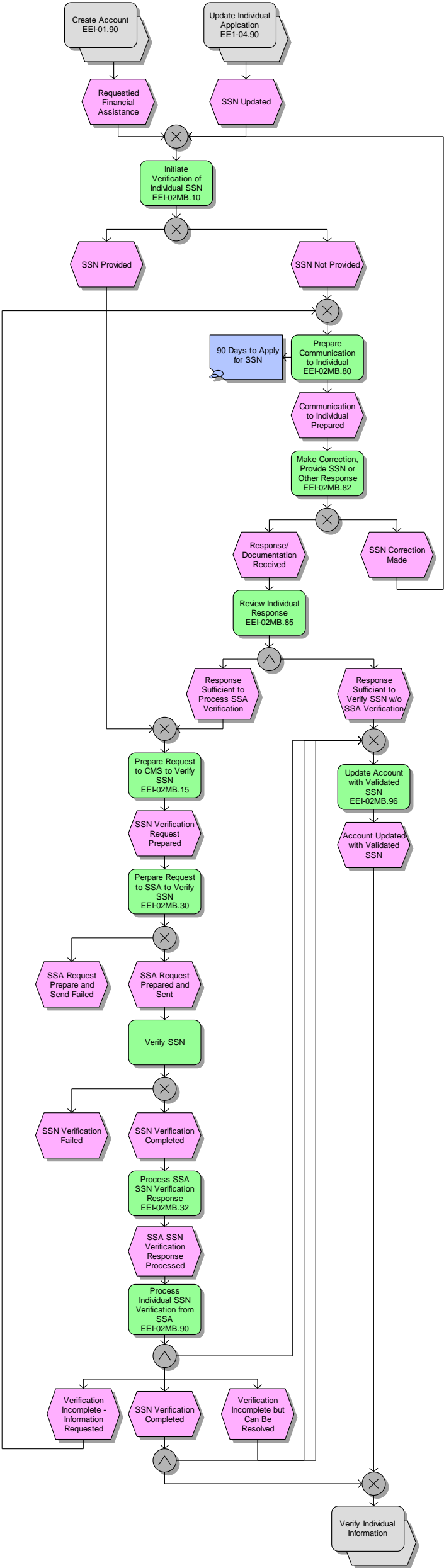


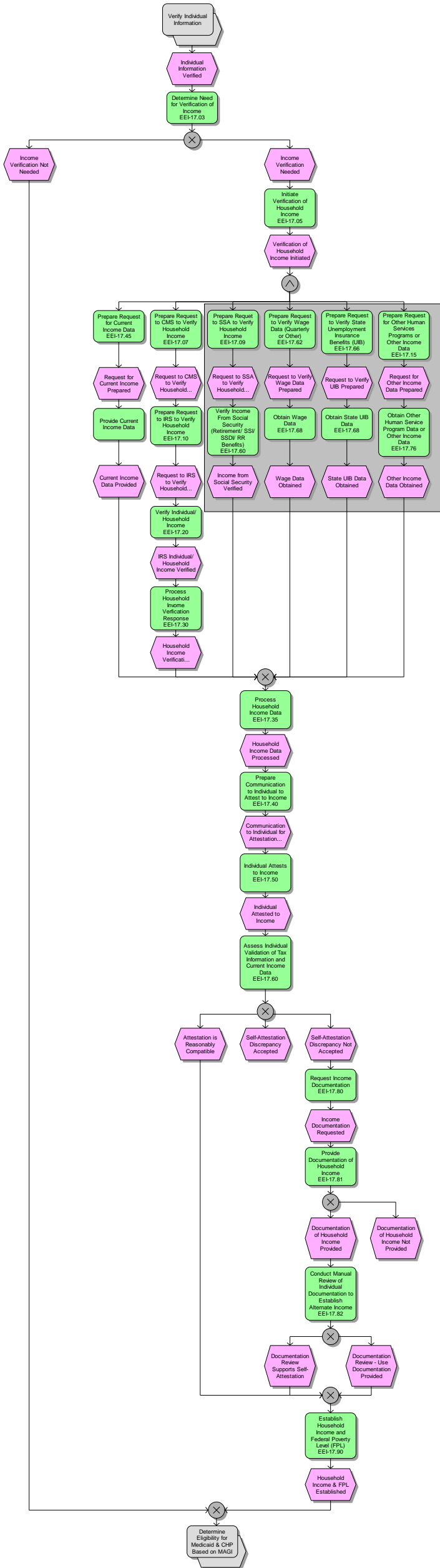
10 Verify Individual(s) Residency in Program Service Area

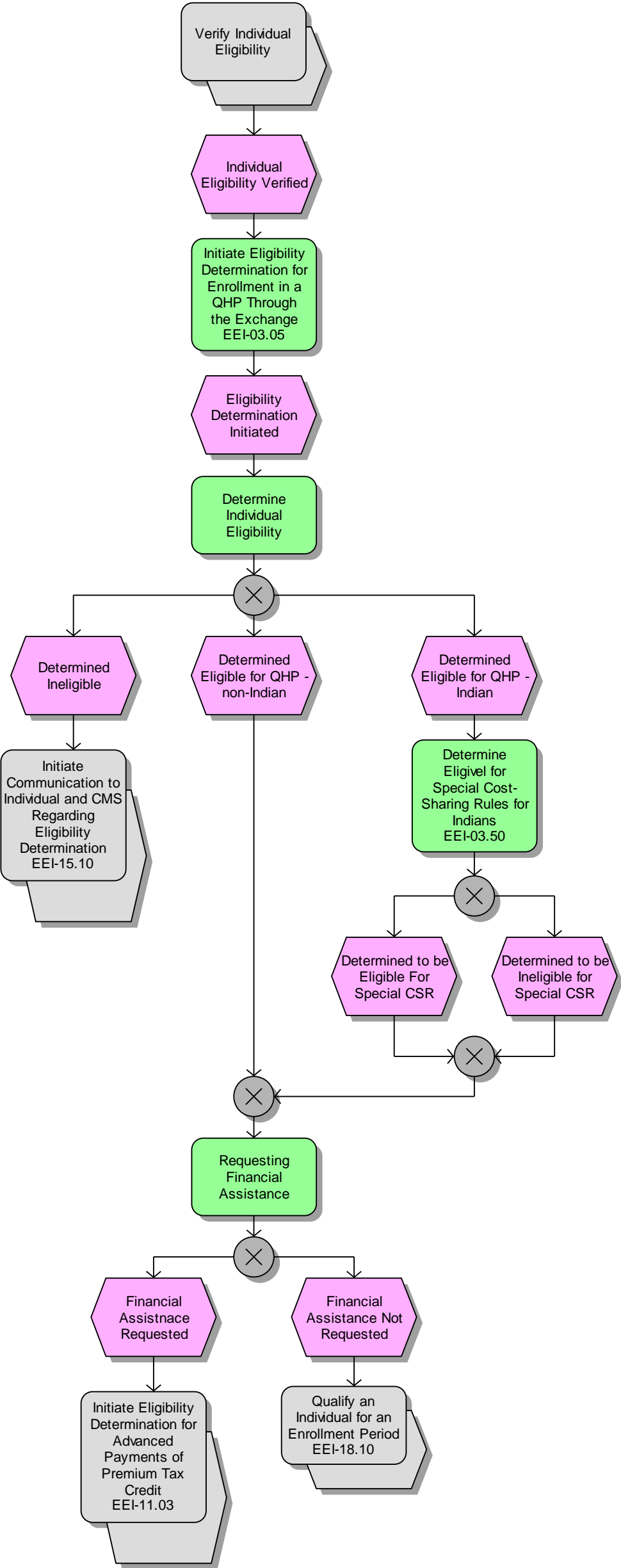
10/19/12 12:16:46 AM Status: In process

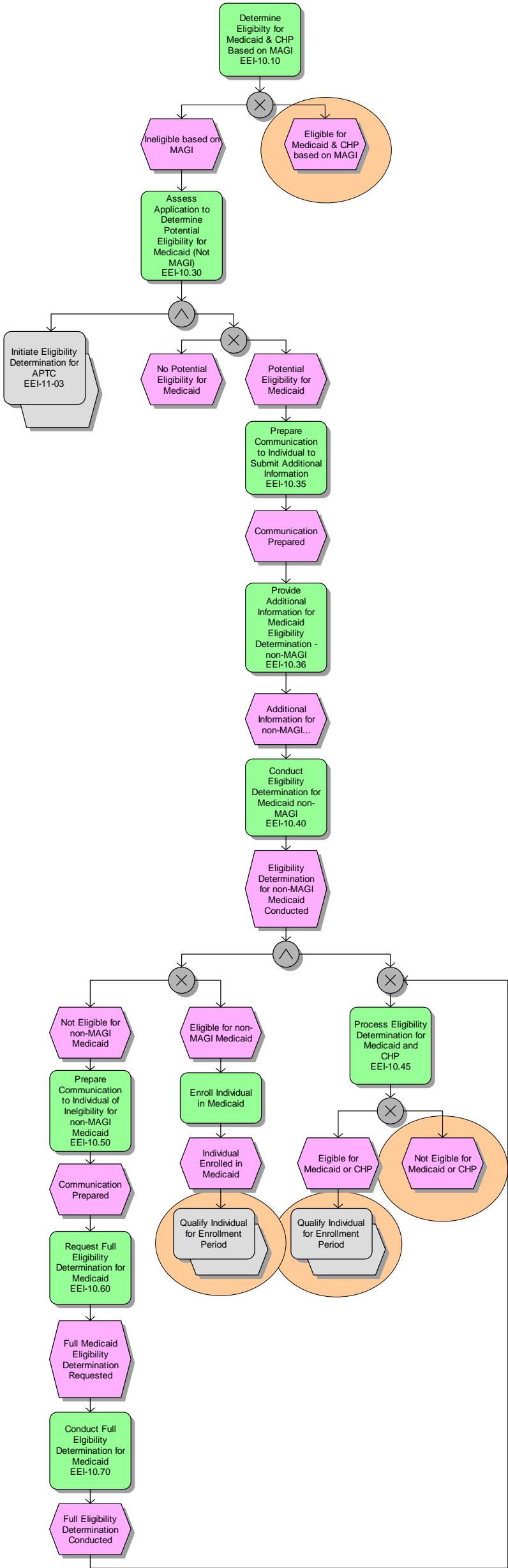


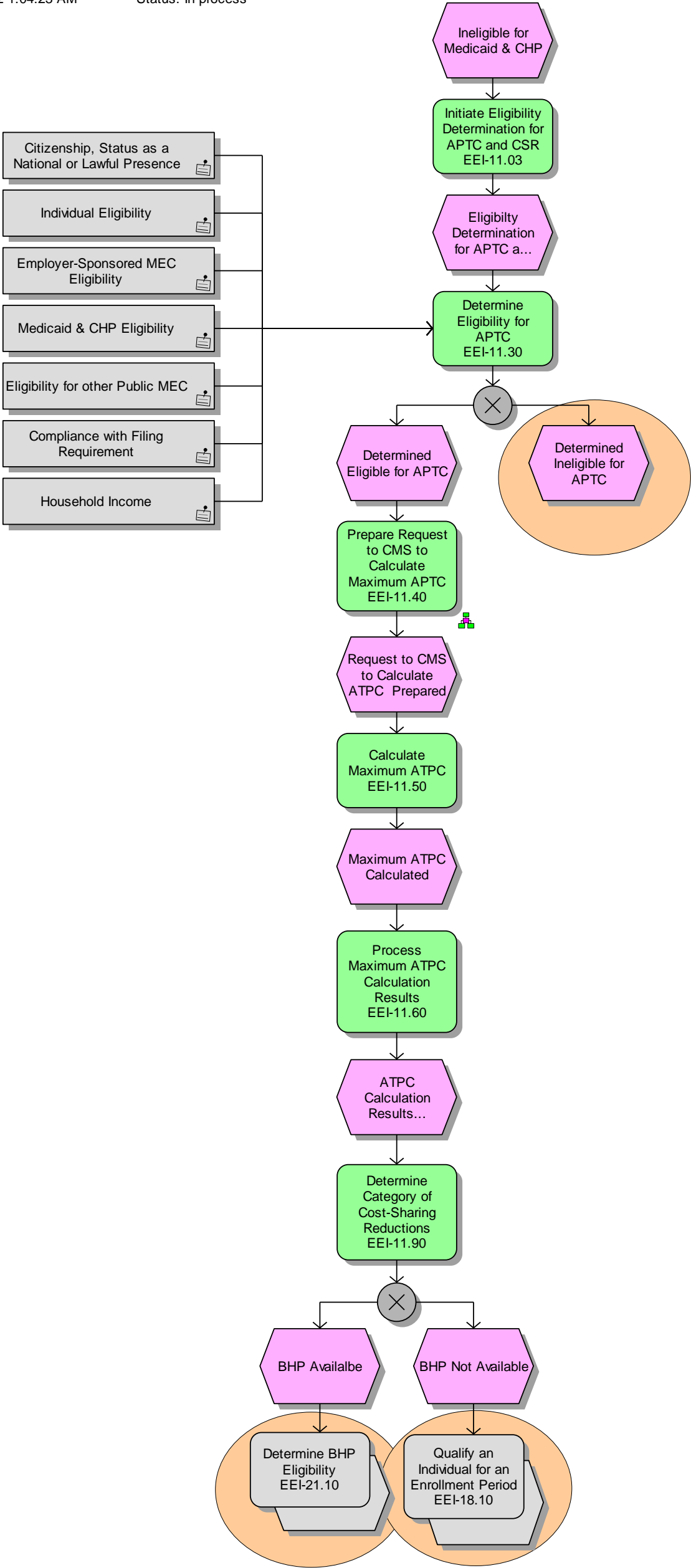


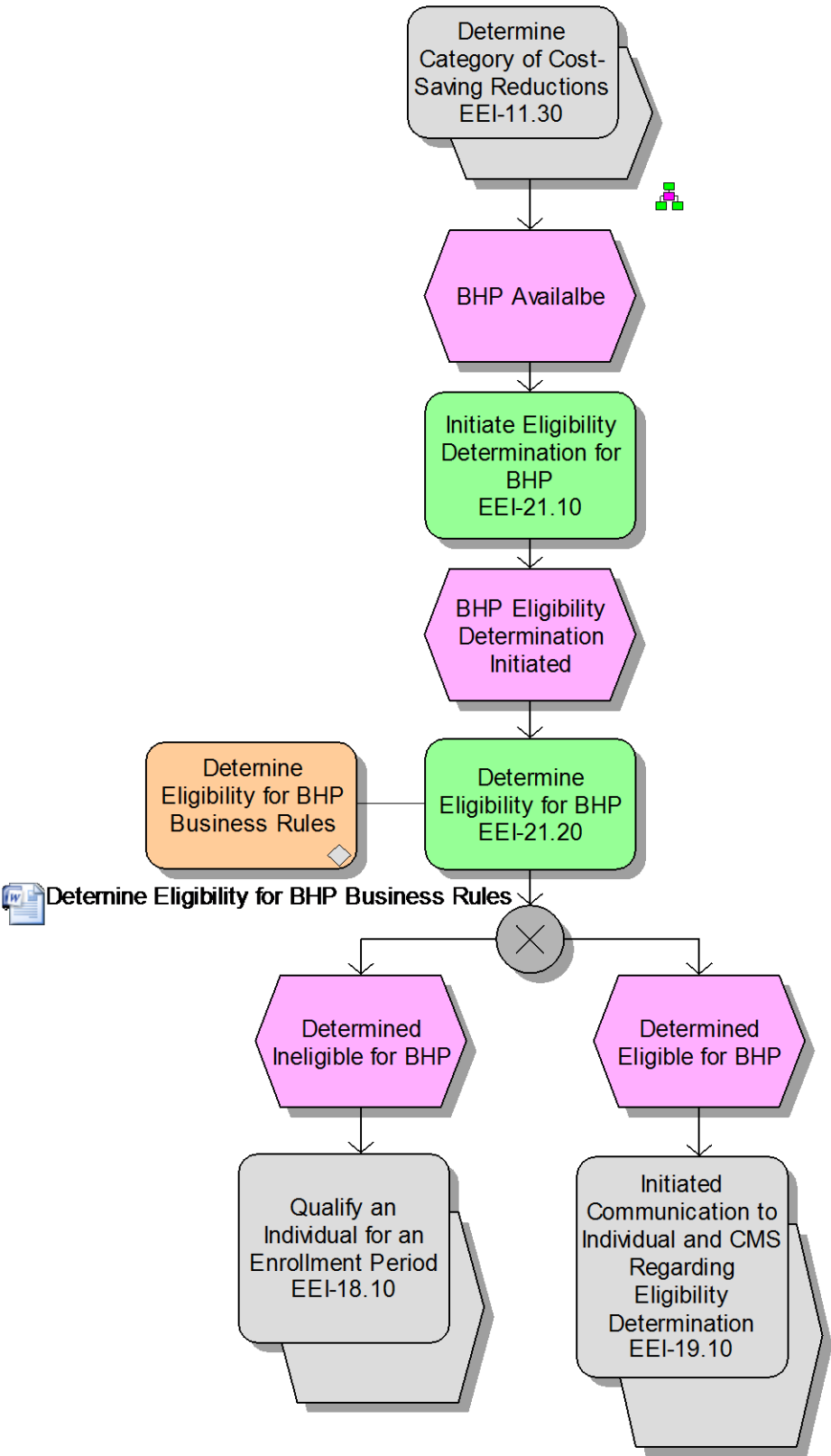


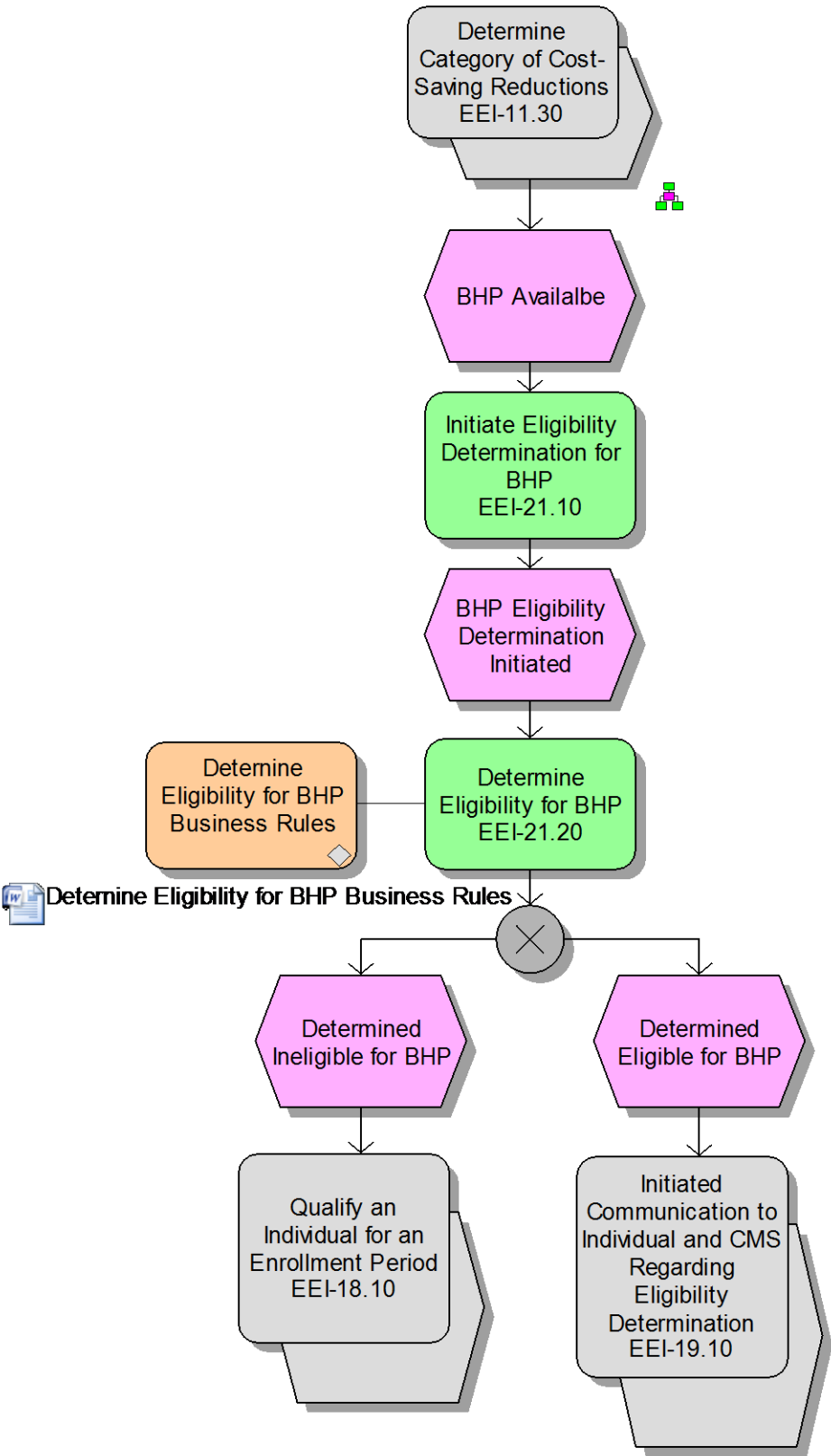




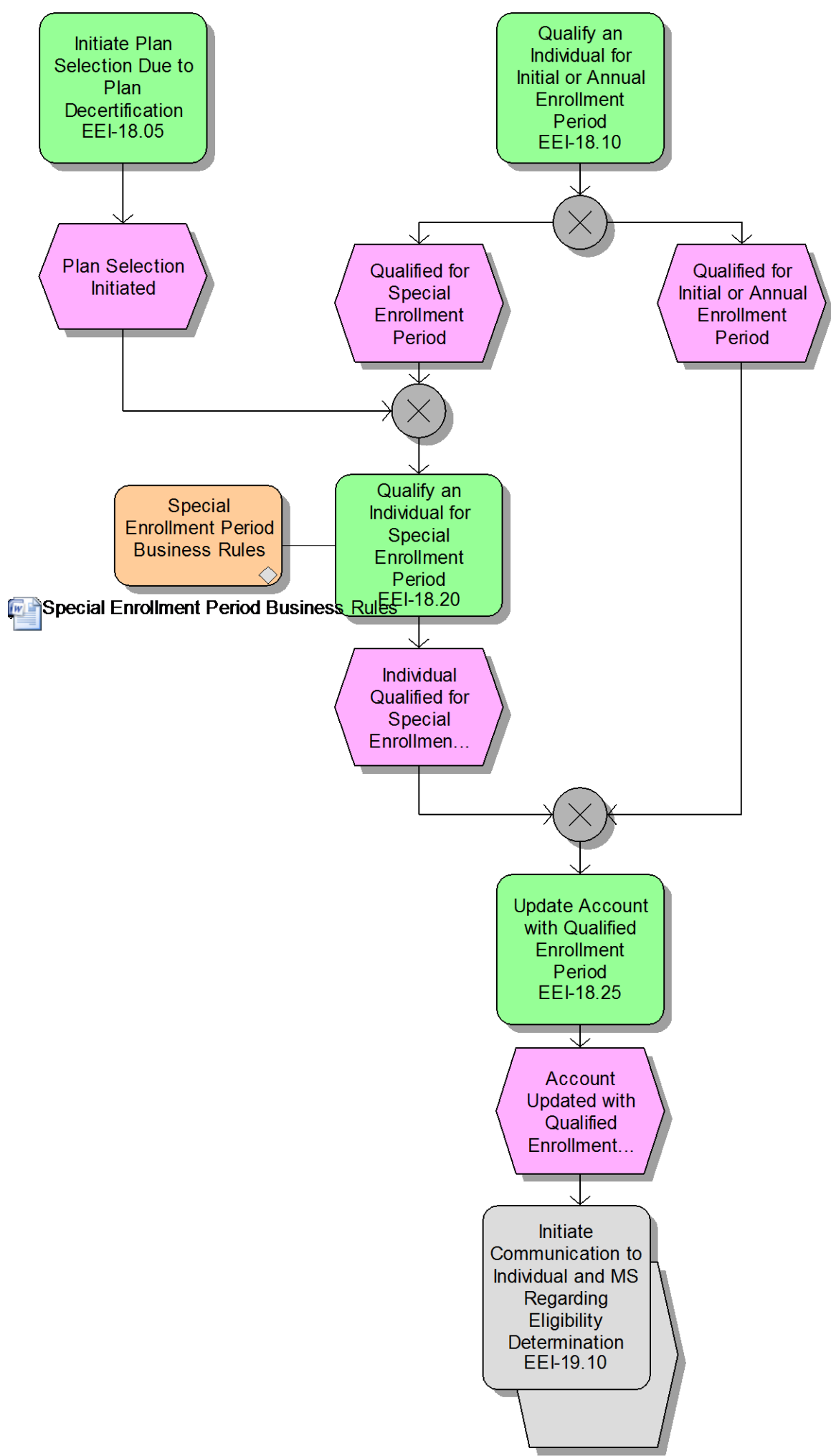








24 Qualify Individual for Enrollment Period
10/19/12 12:14:57 AM



30 Calculate Maximum APTC

10/19/12 12:38:16 AM Status: In process

