

**New York Health Benefit Exchange**

**Detailed Design Review Summary for  
9.4.9 Performance Measures  
October 9 and 10**

<u>Item Number</u>	<u>Topic</u>
9.4.9	Performance Measures



# **New York State Department of Health**

## **NYS Health Exchange (NY-HX) Project**

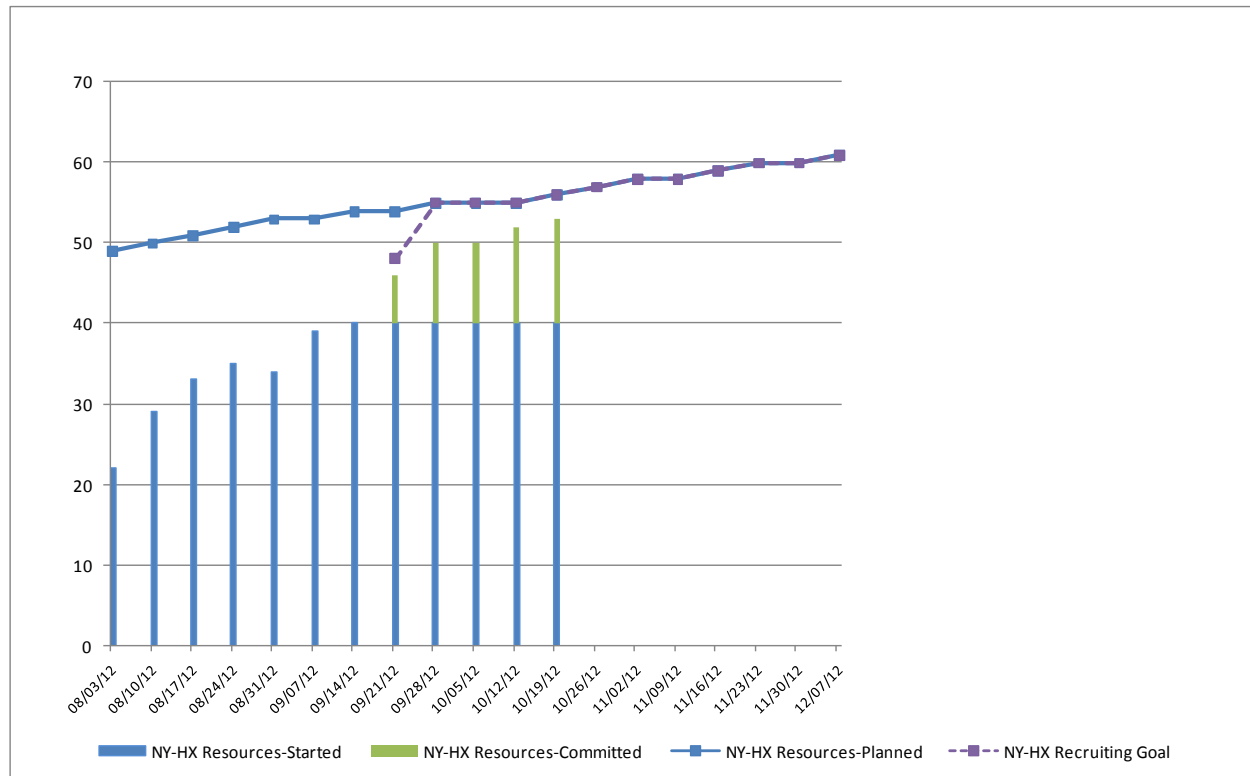
**CSC**

### **Performance Measures**

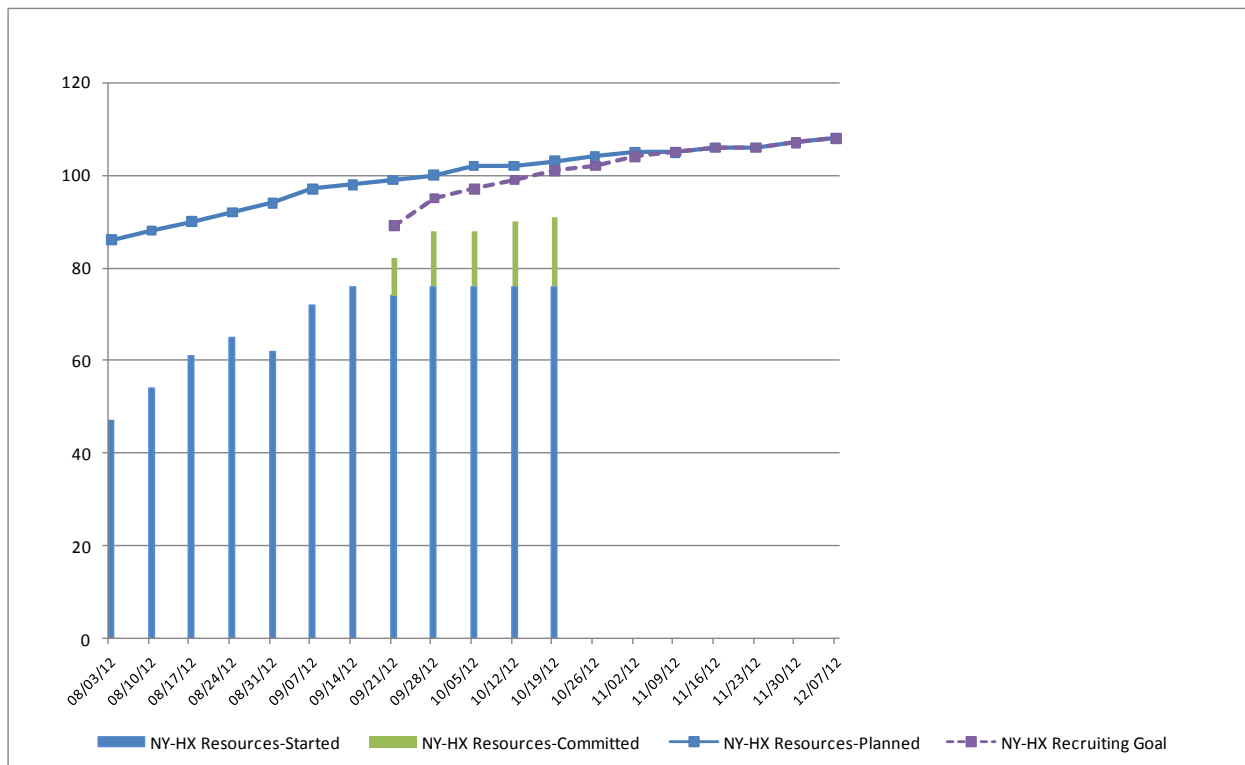
Release PRELIMINARY  
Date Submitted: Sept. 20, 2012

## Table of Figures

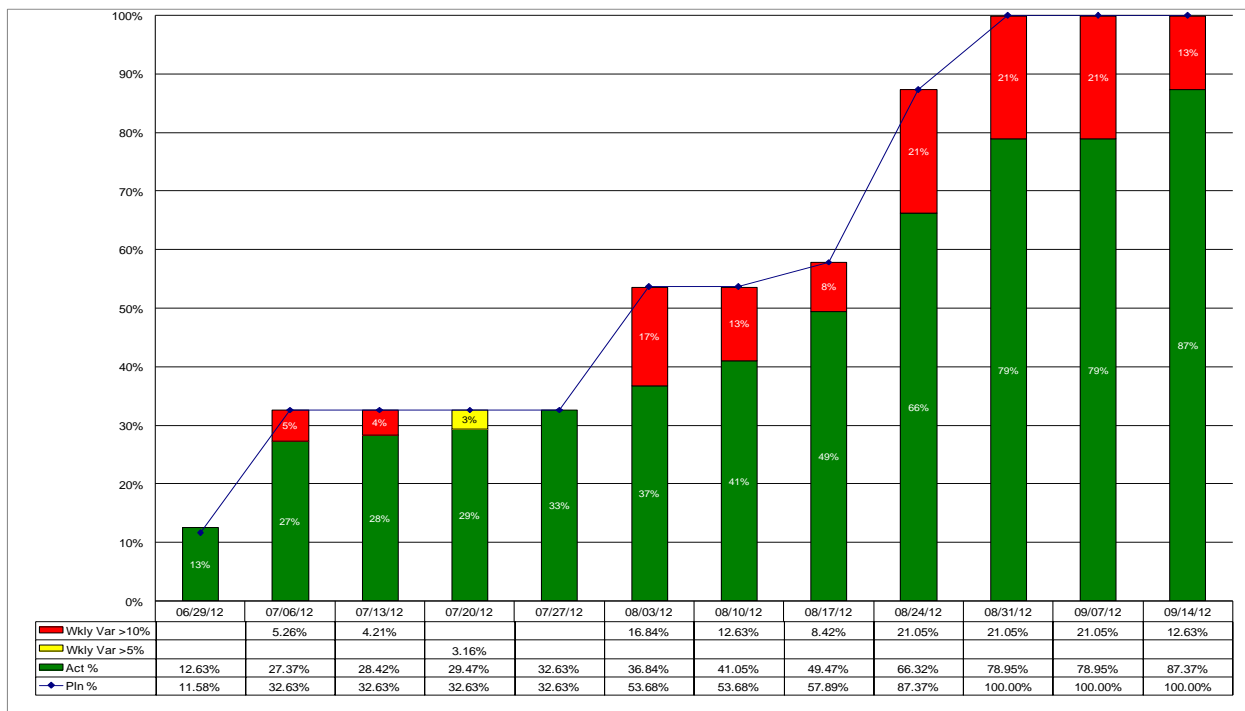
Figure 1: NY-HX Technical Staff Recruiting Metrics.....	2
Figure 2: NY-HX Staff Recruiting Metrics .....	3
Figure 3: Early Contract Deliverables Tracking Metrics .....	3
Figure 4: CMS Design Review Readiness CSC Artifact Metrics.....	4
Figure 5: Overall Program Burn Metrics .....	5



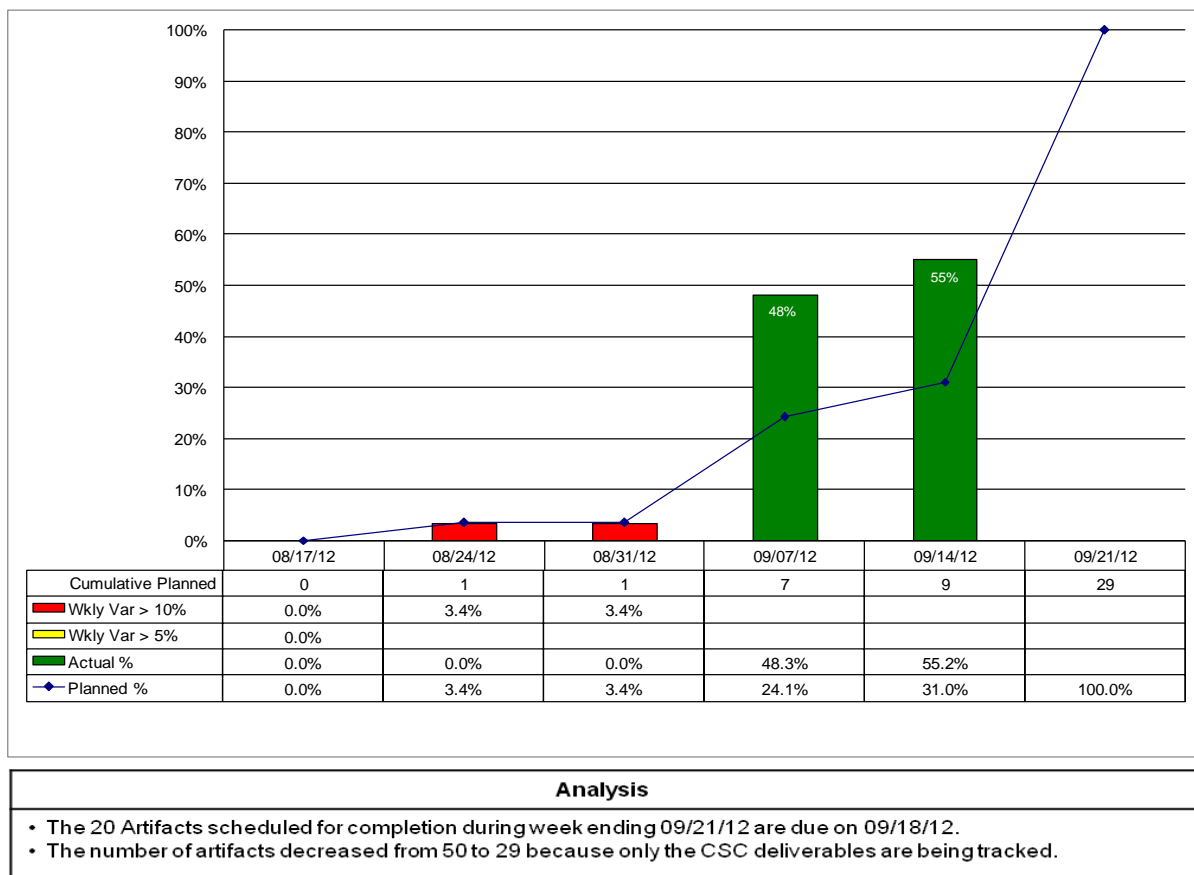
**Figure 1: NY-HX Technical Staff Recruiting Metrics**



**Figure 2: NY-HX Staff Recruiting Metrics**



**Figure 3: Early Contract Deliverables Tracking Metrics**



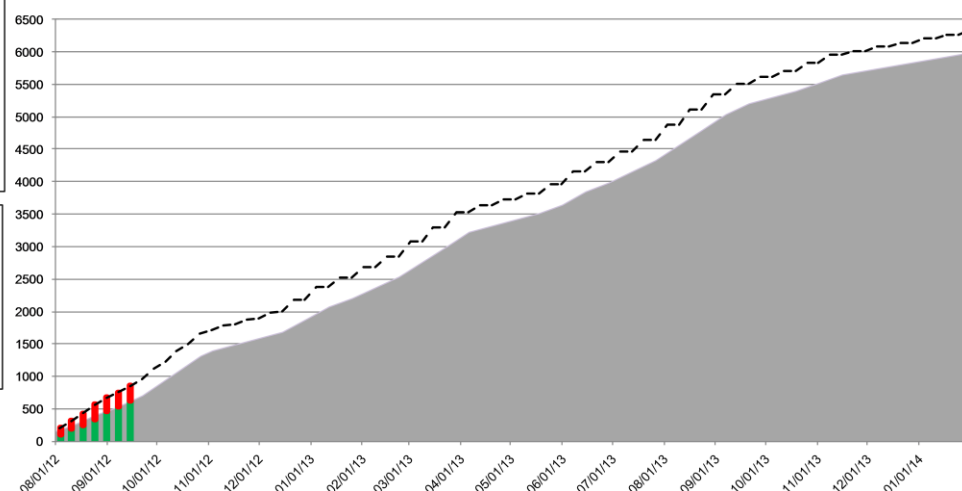
**Figure 4: CMS Design Review Readiness CSC Artifact Metrics**

As of 09/14/12 the program is 9.7% complete (story points completed/ story points planned).

Estimate Confidence Level: 14.6% of story points refined as a result of Sprint 0 planning to date.

Cumulative Baseline is based on RFP Estimate -> Refined Sprint 0 + Scope Change.

Cumulative Revised Plan is based any replanning after Sprint 0 and also includes scope change.



	Jul-12	Aug-12	Sep-12	Oct-12	Nov-12	Dec-12	Jan-13	Feb-13	Mar-13	Apr-13	May-13	Jun-13	Jul-13	Aug-13	Sep-13	Oct-13	Nov-13	Dec-13	Jan-14
Cumulative Baseline	119	465	827	1316	1588	1877	2205	2535	3106	3368	3643	3985	4329	4916	5252	5458	5710	5834	5991
10% Variance (Plan - Actual)	52.27	202.09	232.84																
5% Variance (Plan - Actual)	0	0	0																
Cumulative Actual Story Points Completed	80.73	468.91	616.16																
Cumulative Revised Plan	133	671	1120	1659	1900	2189	2517	2847	3536	3728	3955	4297	4641	5347	5612	5832	6022	6146	6336
Weekly Scope Change	0	0	0																
Cum Scope Change	0	0	0																
% Complete	1.3%	7.4%	9.7%																

September 2012 Data includes data through 09/14/12.

**Figure 5: Overall Program Burn Metrics**